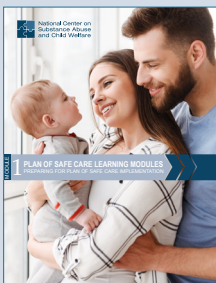


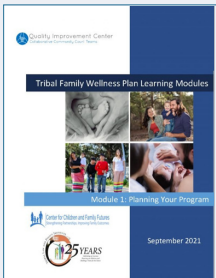
NATIONAL CENTER ON SUBSTANCE ABUSE AND CHILD WELFARE RESOURCES FOR PROFESSIONALS WORKING WITH PREGNANT AND PARENTING WOMEN AFFECTED BY SUBSTANCE USE DISORDERS AND INVOLVED WITH CHILD WELFARE



[Plans of Safe Care Learning Modules](#)

Is a five-part series on Plans of Safe Care (POSC) for infants born with and identified as affected by substance abuse or withdrawal symptoms resulting from prenatal drug exposure, fetal alcohol spectrum disorder (FASD), or their affected family or caregiver. The series is intended to guide state, Tribal, and local collaborative partners in improving their systems and services for infants affected by prenatal substance exposure and their families. These modules include the following:

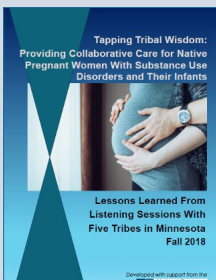
- [Module 1: Preparing for Plan of Safe Care Implementation](#)
- [Module 2: Collaborative Partnerships for Plans of Safe Care](#)
- [Module 3: Determining Who Needs a Plan of Safe Care](#)
- [Module 4: Implementing and Monitoring Plans of Safe Care](#)
- [Module 5: Overseeing State Plans of Safe Care Systems and Reporting Data](#)



[Tribal Family Wellness Plan Learning Modules](#)

Prepared in collaboration with the Tribal Law and Policy Institute. Guides Tribally driven collaboratives seeking to: 1) reduce the effects of substance abuse on pregnant women and parenting families, 2) improve systems and services to reduce prenatal substance exposure, and 3) prevent the separation of families, and support infant and family wellness. Modules include:

- [Module 1: Planning Your Program](#)
- [Module 2: Establishing Collaborative Partnerships](#)
- [Module 3: Responding to Infants and Families Affected by Substance Exposure](#)
- [Module 4: Implementing and Monitoring Family Wellness Plan](#)

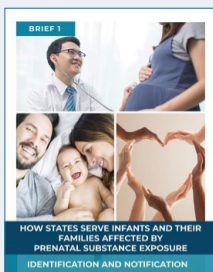


[Tapping Tribal Wisdom: Providing Collaborative Care for Native Pregnant Women with Substance Use Disorders and Their Infants](#)

Provides information from listening sessions with five Tribes. All received funding from the Minnesota Health Care Administration's Integrated Care for High-Risk Pregnant Women to help with the collaborative care models these Tribes implemented when working with pregnant American Indian women and their families.

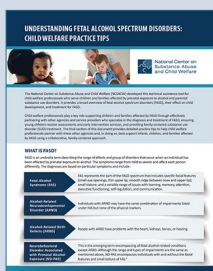
Describes what worked well when developing and sustaining collaborative approaches, offers recommendations for next steps in achieving improved outcomes, and details what support or resources are most useful to Tribes.

How States Serve Infants and Their Families Affected by Prenatal Substance Exposure Series and Learning Exchanges



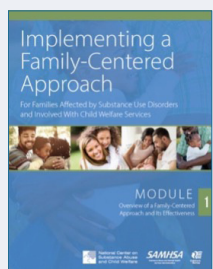
Highlights states' approaches to serving infants and their families affected by prenatal substance exposure. The briefs are derived from NCSACW's review of states' Annual Progress and Services Reports (APSRs) pertaining to Section 503 "Infant Plan of Safe Care" of the Child Abuse and Prevention Treatment Act (CAPTA) and years of practice-based experience providing technical assistance (TA) to support systems-level policy efforts and practice-level innovations to improve outcomes for these infants and families. Each brief is accompanied by a Learning Exchange webinar hosted by NCSACW.

- **Brief 1: Identification and Notification**
 - **Learning Exchange: Identification and Notification**
- **Brief 2: Plans of Safe Care Data and Monitoring**
 - **Learning Exchange: Plans of Safe Care Data and Monitoring**
- **Brief 3: Lessons from Implementation of Plans of Safe Care**
 - **Learning Exchange: Lessons from Implementation of Plans of Safe Care**



Understanding Fetal Alcohol Spectrum Disorders: Child Welfare Practice Tips

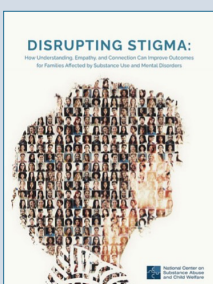
Provides an overview of FASDs, the effect of FASD on child development, FASD treatment, and child welfare practice strategies to support infants, children, and families with a family-centered approach.



Implementing a Family-Centered Approach Modules

Focuses on implementing a family-centered approach. Designed for state-, county-, and agency-level collaborative partners working together to improve systems, services, and outcomes for children and families affected by substance use disorders (SUDs). The modules include:

- **Module 1: Overview of a Family-Centered Approach and Its Effectiveness**
- **Module 2: On the Ground—Family-Centered Practice**
- **Module 3: Collaboration to Support Family-Centered Practices at the County and State Level**



Disrupting Stigma: How Understanding, Empathy, and Connection Can Improve Outcomes for Families Affected by Substance Use and Mental Disorders

Supports cross-system collaborative teams in their work to reduce stigma in interactions, expectations, and policies affecting families. It provides several strategies to fight stigma and facilitate engagement with parents and family members affected by SUDs.

 <p>ENGAGING PARENTS AND YOUTHS WITH LIVED EXPERIENCE</p> <p>Strengthening Collaborative Policy and Practice Initiatives for Families with Mental Health and Substance Use Disorders</p> <p>March 2018</p>	<p><u>Engaging Parents and Youths with Direct Experience</u></p> <p>Outlines key strategies collaboratives should consider when recruiting and engaging adults and youths with personal experience who were involved with the child welfare system due to a SUD or other mental health challenge. Also included are resources and links to ensure collaboratives have the necessary information to support meaningful partnerships.</p>
 <p>Understanding Substance Use Disorder Treatment: A Resource Guide for Professionals Referring to Treatment</p> <p>March 2018</p>	<p><u>Understanding Substance Use Disorder Treatment: A Resource Guide for Professionals Referring to Treatment</u></p> <p>Offers those professionals referring parents to SUD treatment with a fundamental understanding of treatment. Includes a list of questions child welfare or court staff can ask treatment providers to ensure staff make effective linkages. Professionals can then make informed referral decisions for services that meet the family's needs.</p>
 <p>BUILDING COLLABORATIVE CAPACITY SERIES</p> <p>MODULE 5</p> <p>HOW TO DEVELOP CROSS-SYSTEMS TEAMS AND IMPLEMENT COLLABORATIVE PRACTICE</p> <p>March 2018</p>	<p><u>Building Collaborative Capacity Series: Module 5 –Frontline Collaborative Efforts: Developing Screening Protocols to Identify Parental Substance Use Disorders and Related Child and Family Needs</u></p> <p>Provides an overview of the screening tools and processes that child welfare, substance use treatment, health care, and other community-based agencies can use to identify parental SUDs and related challenges faced by children and families. Describes the key steps collaborative teams can take to develop a comprehensive screening protocol.</p>
 <p>UNDERSTANDING ENGAGEMENT OF FAMILIES AFFECTED BY SUBSTANCE USE DISORDERS: CHILD WELFARE PRACTICE TIPS</p> <p>March 2018</p>	<p><u>Child Welfare Practice Tips Series</u></p> <p>Highlights important considerations for child welfare professionals to understand as they support families affected by SUDs. The series includes:</p> <ul style="list-style-type: none"> ■ <u>Understanding Engagement of Families Affected by Substance Use Disorders</u> ■ <u>Understanding Substance Use Disorders: What Child Welfare Staff Need to Know</u> ■ <u>Understanding Screening and Assessment of Substance Use Disorders</u> ■ <u>Identifying Safety and Protective Capacities for Families with Parental Substance Use Disorders and Child Welfare Involvement</u> ■ <u>Child Welfare & Planning for Safety: A Collaborative Approach for Families with Parental Substance Use Disorders and Child Welfare Involvement</u>
 <p>Infants and Families Affected by Prenatal Substance Exposure: Five Points of Family Intervention</p> <p>March 2018</p>	<p><u>Infants with Prenatal Substance Exposure and their Families: Five Points of Family Intervention</u></p> <p>Enables collaborative teams to learn about the <i>Five Points of Family Intervention</i> and identify major points in time in which their agencies can improve outcomes for infants with prenatal substance exposure (IPSE), pregnant and parenting women with SUDs, and their families. Provides examples of policy and practice strategies at each of the intervention points that child welfare, substance use treatment, health care, and other community agencies can employ to effectively serve this population.</p>

	<p><u>On the Ground: How States are Addressing Plans of Safe Care for Infants with Prenatal Substance Exposure and Their Families</u></p> <p>Provides on-the-ground examples from states that have implemented comprehensive approaches to POSC for IPSE, their families, and caregivers. These concrete examples help states and agencies consider practice and policy systems change to best serve these families in their own communities.</p>
	<p><u>A Collaborative Approach to the Treatment of Pregnant Women with Opioid Use Disorders</u></p> <p>Offers best practices to states, Tribes, and local communities on collaborative treatment approaches for pregnant women with opioid use disorders (OUDs), including medication-assisted treatment (MAT). Also includes an in-depth case study and a guide for collaborative planning including needs and gap analysis tools for priority setting and action planning.</p>
	<p><u>In-Depth Technical Assistance Program Description</u></p> <p>Provides an overview of NCSACW's In-Depth Technical Assistance (IDTA) program, which has been provided to 26 unique sites from 2003-2019. Describes the IDTA program model including the phases of the IDTA model, the role of the IDTA change liaison, IDTA's foundational frameworks, and key lessons of successful collaboration.</p>
	<p><u>In-Depth Technical Assistance: Infants with Prenatal Substance Exposure</u></p> <p>Provides an overview of the IDTA program for IPSE and their families. It describes the work of 11 states that have received IDTA since 2014 or are currently receiving IDTA. Highlights state teams' efforts to identify barriers and challenges in engaging families affected by prenatal substance exposure, as well as states' efforts to develop strategies to improve outcomes for pregnant and postpartum women with OUDs, IPSE, and their families. The states identified key lessons of successful collaboration to improve policy and practice.</p>
	<p><u>Medication-Assisted Treatment: A Primer for Judicial Professionals Serving Parents and Children Affected by Substance use Disorders</u></p> <p>Offers information to judicial professionals serving parents and children affected by OUDs. An overview of MAT includes the benefits and risks, barriers to treatment, language considerations, and the importance of collaboration. Highlights the unique needs of special populations, including the use of MAT during pregnancy, and MAT for parents involved in the child welfare system—and those with co-occurring disorders.</p>



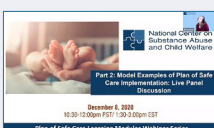
Medication-Assisted Treatment in the Courtroom: A Bench Card for Judicial Professionals Serving Parents and Children Affected by Substance Use Disorders

Provides MAT-related information to judicial professionals and their collaborative partners serving families affected by OUDs. Also included: an overview of MAT, information on frequently used medications, questions to facilitate discussions with court participants, and links to additional resources with a focus on special populations receiving MAT.



Plans of Safe Care – What your Multidisciplinary Team Needs to Know

Highlights the importance of a collaborative approach to guiding pregnant women with SUDs into effective treatment while describing strategies for multidisciplinary teams to plan for the safe care of infants and families.



Model Examples for Plan of Safe Care Implementation: Live Panel Discussion

Features state and county child welfare professionals—along with health care and SUD representatives—who discuss their work developing and implementing POSC.



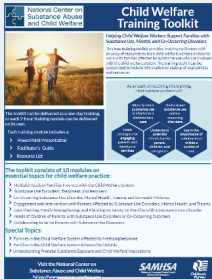
NCSACW Online Tutorials

Helps substance use treatment, child welfare, and legal professionals increase their knowledge and skills to work with families affected by SUDs, while building cross-system collaboration across the various agencies serving them.

Child Welfare Training Toolkit

Provides facilitators with an array of resources to train staff on how to work with families affected by substance use who are also involved with the child welfare system. Works as a 1-day training or separate 2-hour training modules (which includes a PowerPoint presentation, Facilitator's Guide, and Resource List). The 10 modules on essential topics for child welfare practice include:

- *Module 1: Understanding the Multiple Needs of Families Involved with the Child Welfare System*
- *Module 2: Understanding Substance Use Disorders, Treatment & Recovery*
- *Module 3: Understanding Co-Occurring Disorders, Domestic Violence & Trauma*
- *Module 4: Engagement & Intervention of Co-Occurring Substance Use, Mental Disorders & Trauma*
- *Module 5: Case Planning Considerations for Families Affected by Parental Substance Use & Co-Occurring Disorders*
- *Module 6: Understanding the Needs of Children & Adolescents Affected by Parental Substance Use & Co-Occurring Disorders*
- *Module 7: A Coordinated Multi-System Approach to Better Serve Children & Families Affected by Substance Use & Co-Occurring Disorders*
- *Module 8: Special Topic: Considerations for Children & Families Affected by Methamphetamine Use*
- *Module 9: Special Topic: Considerations for Children & Families Affected by Opioid Use*
- *Module 10: Special Topic: Care Coordination Considerations for Children & Families Affected by Prenatal Substance Exposure*



CONTACT US

Email: ncsacw@cffutures.org

Website: ncsacw.acf.hhs.gov

Call: 866-493-2758



This document is used as a supplement to Substance Abuse and Mental Health Services Administration's (SAMHSA) **Clinical Guidance for Treatment and Parenting Women with Opioid Use Disorder and Their Infants.**



National Center on
Substance Abuse
and Child Welfare

To learn more about the information in this resource guide from National Center on Substance Abuse and Child Welfare (NCSACW) email us at NCSACW@cffutures.org or call toll-free at 1-866-493-2758.

Acknowledgment: This resource is supported by contract number 75S20422C00001 from the Children's Bureau (CB), Administration for Children and Families (ACF), co-funded by the Substance Abuse and Mental Health Services Administration (SAMHSA). The views, opinions, and content of this brief are those of the authors and do not necessarily reflect the views, opinions, or policies of ACF, SAMHSA or the U.S. Department of Health and Human Services (HHS).